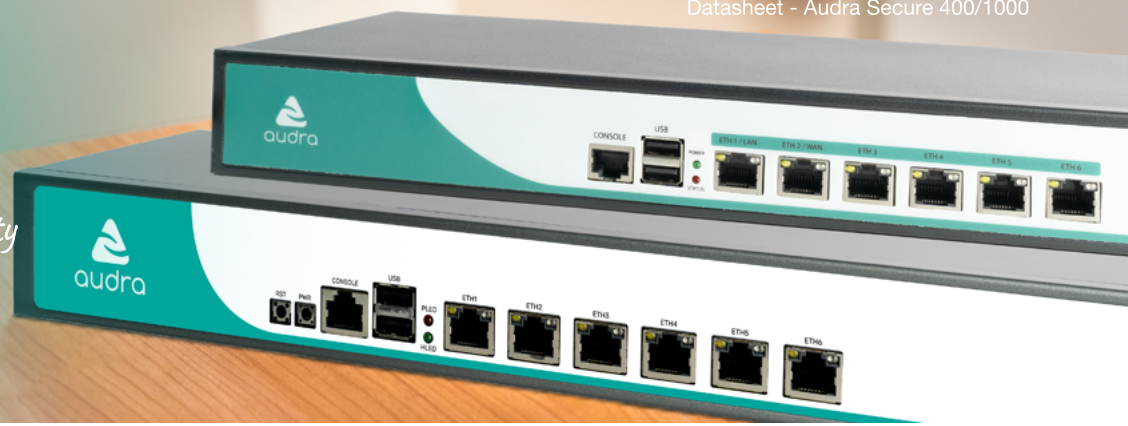




Satisfyingly simple security



Audra Secure – Datasheet

In today's digital age, cybersecurity is a key concern for businesses of all sizes. For small to medium-sized companies, investing in cybersecurity is essential to safeguard sensitive data, maintain customer trust, and ensure business continuity. One of the most effective ways to enhance cybersecurity is by implementing a firewall solution.

Audra Secure is a 2-in-1 router and security device, tailored for small to medium businesses. It acts as a physical barrier between your internal network and external threats, filtering traffic and blocking malicious activities before they can infiltrate your systems.

It provides advanced **protection against a wide range of cyber threats**, ensuring the safety and integrity of your business data and network. Audra Secure offers various security features that enable businesses to detect and prevent threat attempts in real-time, secure remote access for employees, and stay ahead of emerging cyber threats.

Designed with the **needs of growing businesses and distributed workforces** in mind, Audra Secure firewall combines powerful security features with intuitive management tools and cloud architecture to deliver comprehensive protection and ease of use, from anywhere. The central management portal and app simplifies the administration, monitoring, and configuration of network security across an organisation's various locations, offering advantages such as enhanced security, improved efficiency, and better compliance management. As your business grows, cybersecurity needs evolve in tandem.

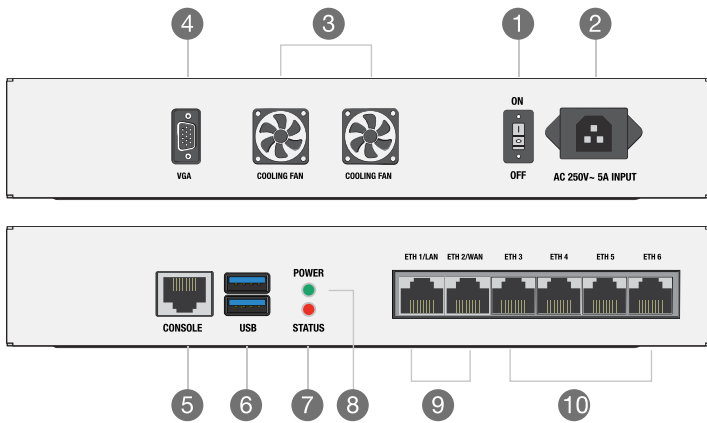
Audra Secure is a scalable solution ensuring that your business remains protected as it expands, without the need for frequent, costly overhauls of your cybersecurity infrastructure.

Audra Secure provides **various activity logs**, real time reports and alerts that are essential tools for businesses, providing benefits that enhance security, compliance, and overall network management. This proactive management reduces the time spent on troubleshooting and resolving network problems, allowing employees to maintain their workflow without delays.

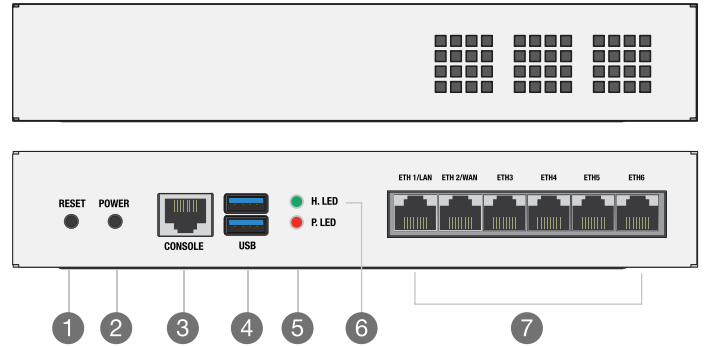
Businesses continuously seek **simplicity and value for money**. Audra Secure offers a very simplified device portfolio and feature set, and for your peace of mind, comes with a warranty for the initial subscription period. There is no need for extensive training or dedicated workforce to manage Audra secure.

In a landscape where cyber threats are ever-evolving, Audra Secure firewall is a vital component in a cybersecurity strategy, ensuring that your business remains protected, compliant, and resilient in the face of potential cyber risks. We not only care for your business, but we also care for a greener environment and hence **we have pledged to plant trees for each device sold**.

Audra Secure 400



Audra Secure 1000



* Diagrams not to scale

Interfaces

- 1. On/Off Switch
- 2. AC 250V~ 5A Input
- 3. Cooling Fan
- 4. VGA Port
- 5. Console
- 6. USB Port(s)
- 7. LAN/WAN Indicator
- 8. Power Indicator
- 9. LAN/WAN Port(s)
- 10. LAN Port(s)

Interfaces

- 1. Reset Button
- 2. Power Button
- 3. Console
- 4. USB Port(s)
- 5. Power Indicator
- 6. System Indicator
- 7. LAN/WAN Port(s)

Device specifications

Feature	Secure 400	Secure 1000
Environment		
Power consumption	35 W	35 W
Humidity	10% ~ 90% RH non-condensing	5% ~ 95% @30°C, non-condensing
Storage temperature	-10°C ~ 65°C	-10°C ~ 60°C
Operating temperature	-40°C ~ 70°C	-20°C to ~ 70°C
Performance		
Throughput	1Gbps per interface	1Gbps per interface
Concurrent connected devices	400	1000
VPN performance	100Mbps for OpenVPN (theoretical)	100Mbps for OpenVPN (theoretical)
Hardware specification		
Dimension	440x250x44mm	430x281x45mm
Weight	1.4 kg	3.5 kg
Mounting	1U Network Server	1U Network Server
Ethernet interface	6xGbe RJ45	6xGbe RJ45
USB	2xUSB 2.0	2xUSB 2.0
Console	Yes	Yes
Power	100~240V AC, 50/60Hz 13A	AC 100-240V ~ 50/60Hz 13A
Model number	SEC-E400	SEC-E1000

Software specifications

Audra Secure key features	Description	Secure 400	Secure 1000
Robust security			
Adware protection	Security measure to block advertisement related link (adware)	✓	✓
Malware protection	Security measure to block malicious link (malware)	✓	✓
IoT safeguard	Security measure that prohibits IoT devices to expose in public/non-trusted zone and block unwanted access	✓	✓
DDoS prevention	Prevent and mitigate distributed denial of service attacks	✓	✓
Access control list (ACL) and filtering	Selectively allowing or blocking network traffic based on rules	✓	✓
Stateful firewall	Tracks ongoing connections to decide which data is allowed through safely. It provides better protection by considering the context of each connection, not just simple pre-defined rules	✓	✓
Content filtering	Restrict access to websites and apps based on predefined categories or classifications	✓	✓
Keyword-based web filtering	Restrict access to websites or online content or app, based on specific keywords or phrases	✓	✓
Enhanced productivity			
Grouping	Organise devices into groups	✓	✓
Bandwidth allocation (QoS)	Group-wise bandwidth allocation	✓	✓
Custom category (IP, port, domain)	To create custom category with domain, IP address and ports and use it for blocking or whitelisting	✓	✓
Time scheduling and time quota	Control access to network resources based on predefined time periods and quota	✓	✓
Networking and management			
One-click Internet off	Quickly and easily disable Internet access for all devices or users within a network with a single action	✓	✓
WAN-redundancy	Multiple WAN links and automated failover	✓	✓
MAC binding/IP reserving	Bind or reserve IP address with device MAC addresses	✓	✓
OpenVPN	Secure remote access with SSL based VPN	Up to 50	Up to 100
Tunnel (IPSec site-to-site, GRE, VTI)	Enable seamless multi-site tunnelling with support for IPSec site-to-site, GRE, and VTI protocols	Up to 20	Up to 40
Advanced NAT	Provide robust and flexible IP address management and traffic routing capabilities	✓	✓
DDNS	Automatically updates the Domain Name System (DNS) records to reflect changes in the IP addresses of WAN interfaces	✓	✓
Local DNS binding	Mapping hostnames to specific IP addresses	✓	✓
Other key aspects			
Central management portal	Manage all Audra firewall devices and policies via portal/app	✓	✓
Alerts and notifications	Various alerts and notifications that can be accessed via email, user portal or app	✓	✓
Subscription and warranty	1,3 and 5 year subscription. Device remains under warranty during active subscription period	✓	✓
Troubleshooting and diagnosis tools	Access to self-serve diagnostics tool	✓	✓
Logs and reports	Session logs, Violation log and usage report	✓	✓
Advance networking features			
Route-based VPN	Secure, scalable VPN connections based on predefined routes	✓	✓
Remote-client VPN (L2TP/IPSEC)	Secure remote access for clients using L2TP/IPSEC protocols	✓	✓
Simple network management protocol (SNMP)	Effective network monitoring and management	✓	✓
Policy-based routing (PBR)	Customise network traffic flow based on specific policies	✓	✓
Static and dynamic routing (OSPF)	Efficient network routing with static routes and OSPF dynamic routing	✓	✓
Advanced interface management	Enhanced network segmentation and control	✓	✓
Netflow exportation	Real-time monitoring and analysis of network traffic patterns	✓	✓



Download here [Family brochure](#)

Go to our partner page www.audrasecurity.com/partners

Contact us at www.audrasecurity.com/contact